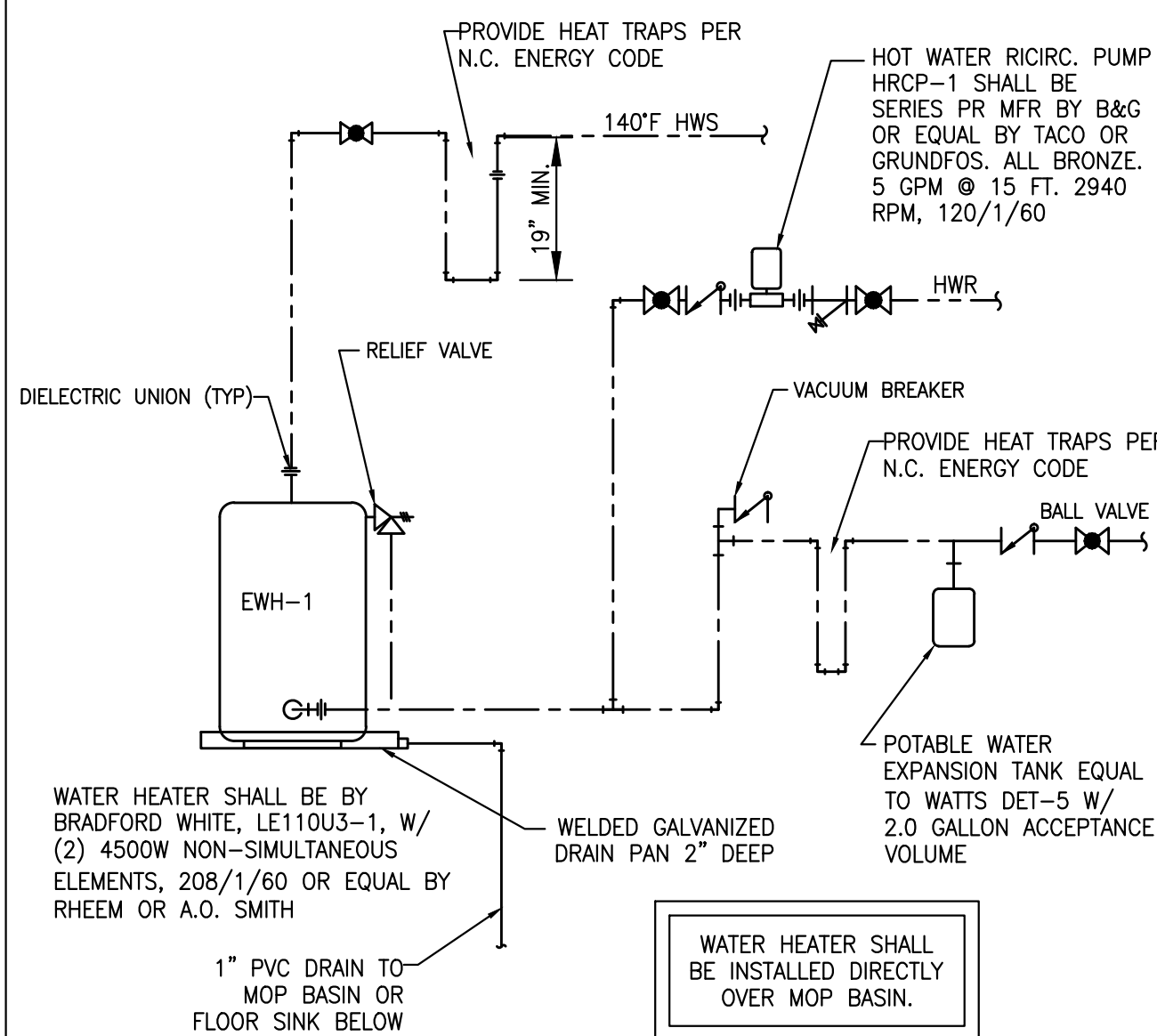
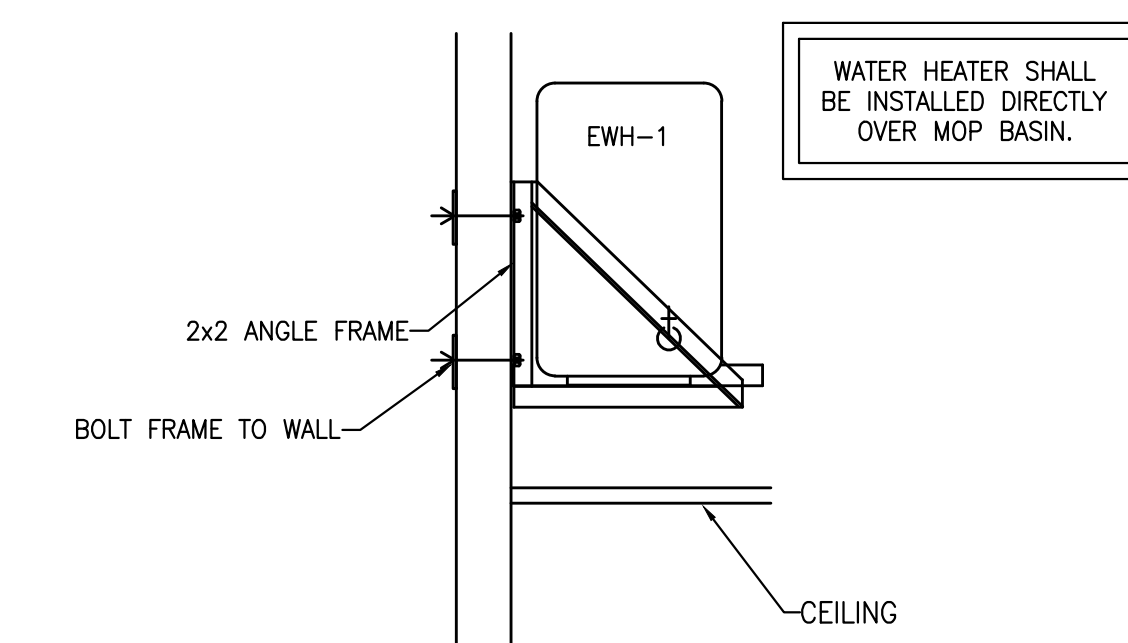


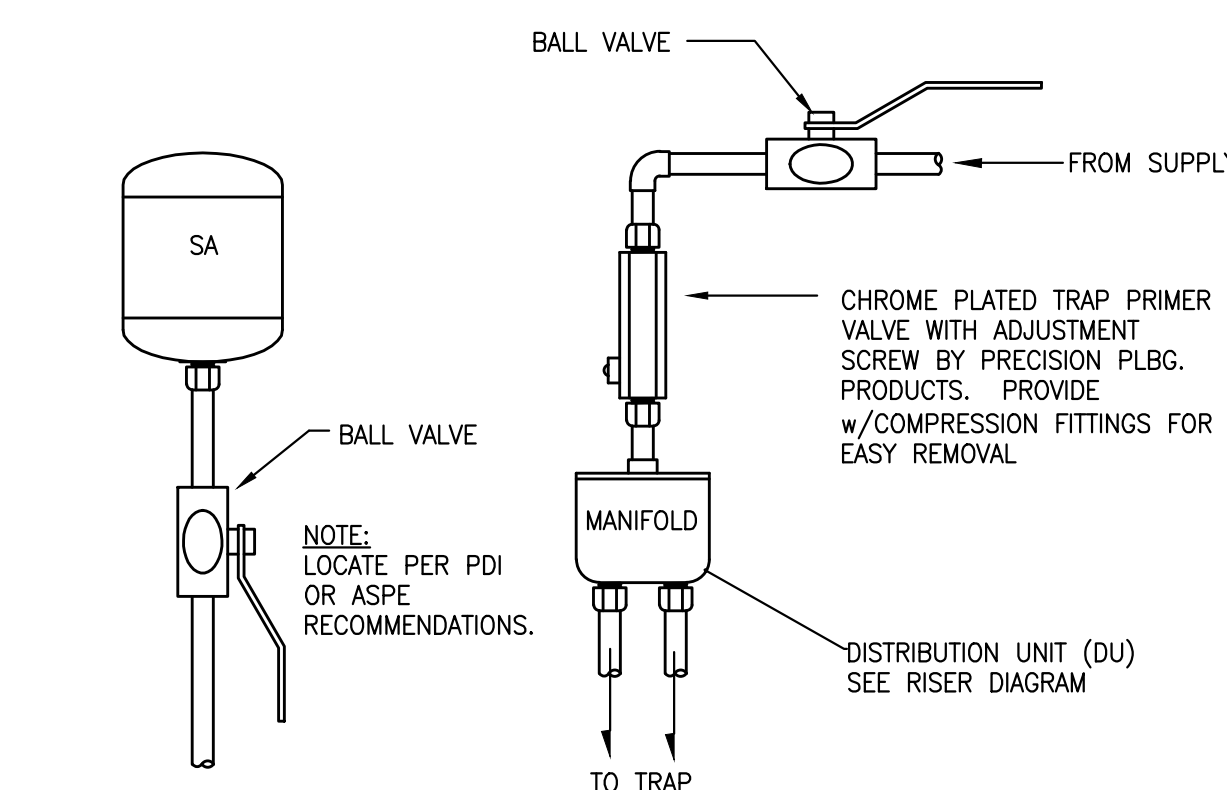
1 TYPICAL PRESSURE REGULATOR SCHEMATIC



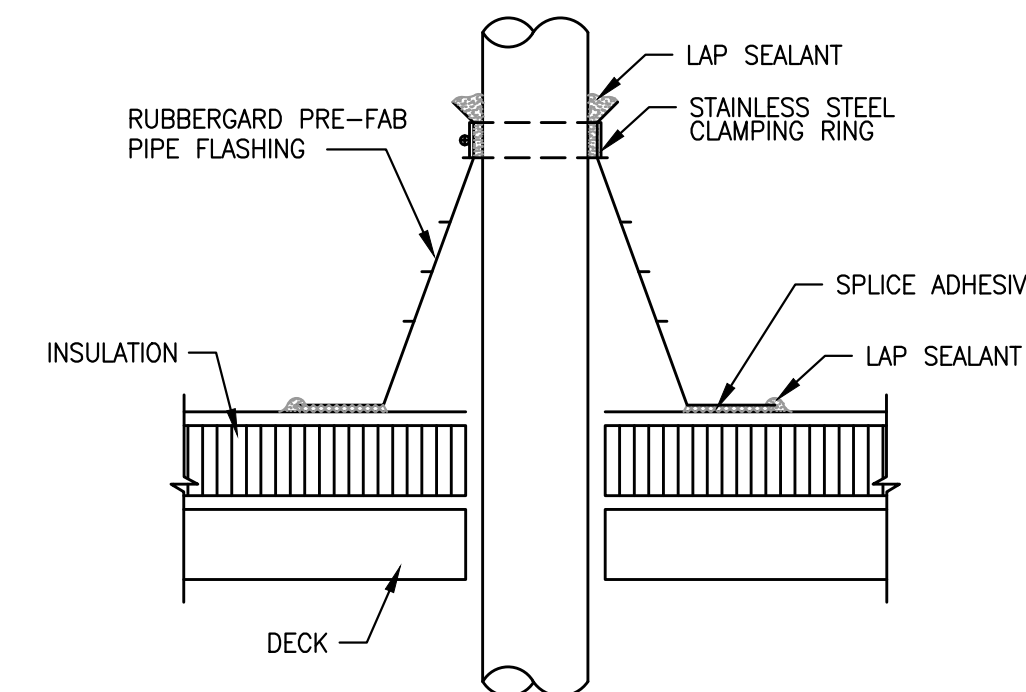
2 WATER HEATER SCHEMATIC



3 WATER HEATER SUPPORT

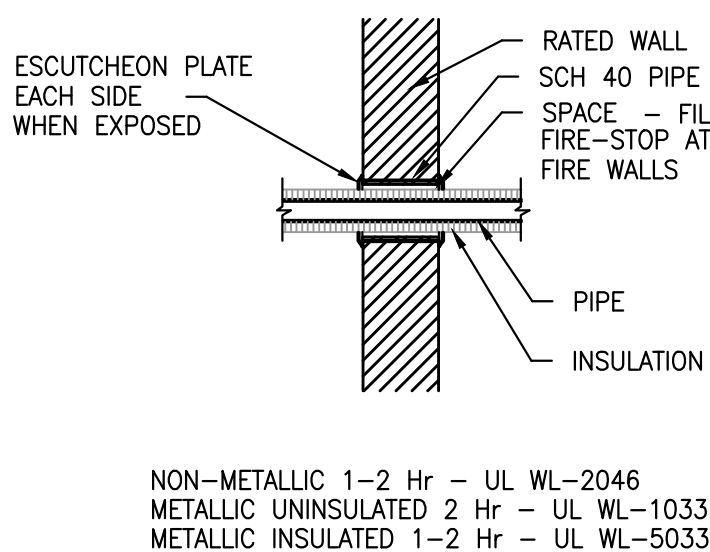


4 SHOCK ABSORBER AND TRAP PRIMER DETAIL



5 TYPICAL VENT (VTR) DETAIL

- NOTES:**
- PIPE BATTEN REQUIRED WHEN THIS DETAIL IS USED ON MECHANICALLY ANCHORED SYSTEMS.
 - REMOVE ALL EXISTING FLASHING, LEADS ETC. PIPE SURFACE MUST BE FREE OF ALL RUST, GREASE, ETC.
 - PIPE MUST BE ANCHORED TO BOTTOM SIDE OF DECK TO ASSURE STABILITY.
 - INSTALL PIPE FLASHING ACCORDING TO MANUFACTURER'S WRITTEN RECOMMENDATIONS.



6 PIPE SLEEVE DETAIL

STRUCTURAL BEAM - STRUCTURE ANGLE - SIZE TO SUPPORT LOAD.

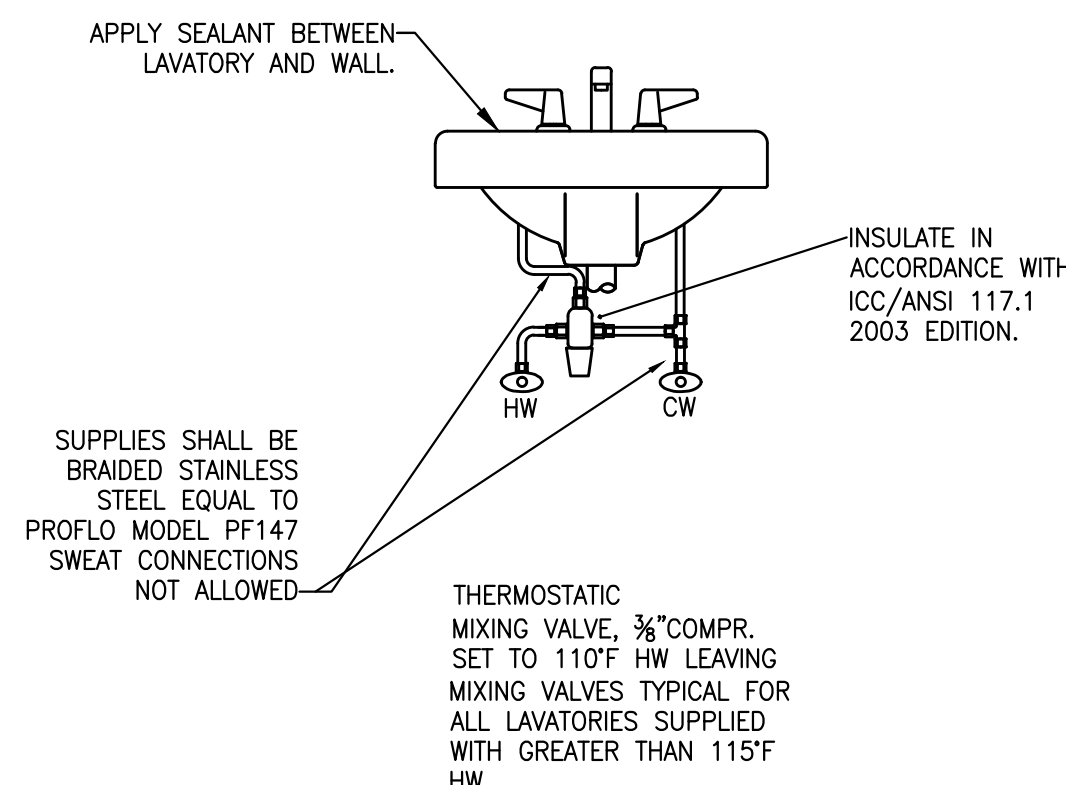
NUT AND WASHER - GALVANIZED ROD - BEAM CLAMP WITH RETAINING CLIP AND LOCK NUT - FIG. 260 - CLEVIS HANGER - SLEEVE

PIPE MATERIAL	MAXIMUM HORIZONTAL SPACING (FEET)	MAXIMUM VERTICAL SPACING (FEET)
ABS PIPE	10	15
ALUMINUM PIPE AND TUBING	10	10
BRASS PIPE	10	10
BRASS TUBING 1/2" DIAMETER AND SMALLER	6	10
BRASS TUBING 3/4" DIAMETER AND LARGER	10	10
CAST-IRON PIPE	5	15
COPPER OR COPPER-ALLOY PIPE	12	10
COPPER OR COPPER-ALLOY TUBING 1/2" DIAMETER OR SMALLER	6	10
COPPER OR COPPER-ALLOY TUBING 3/4" DIAMETER OR LARGER	10	10
CPVC PIPE OR TUBING 1" AND SMALLER	3	10
CPVC PIPE OR TUBING 1 1/2" AND LARGER	4	10
LEAD PIPE	CONTINUOUS	10
PB PIPE OR TUBING	36" (3')	4
PEX TUBING	36" (3')	4
POLYPROPYLENE (PP) PIPE OR TUBING 1" OR SMALLER	36" (3')	10
POLYPROPYLENE (PP) PIPE OR TUBING 1 1/2" OR LARGER	4	10
PVC PIPE	4	10
STEEL TUBING	6	10
STEEL PIPE	12	15

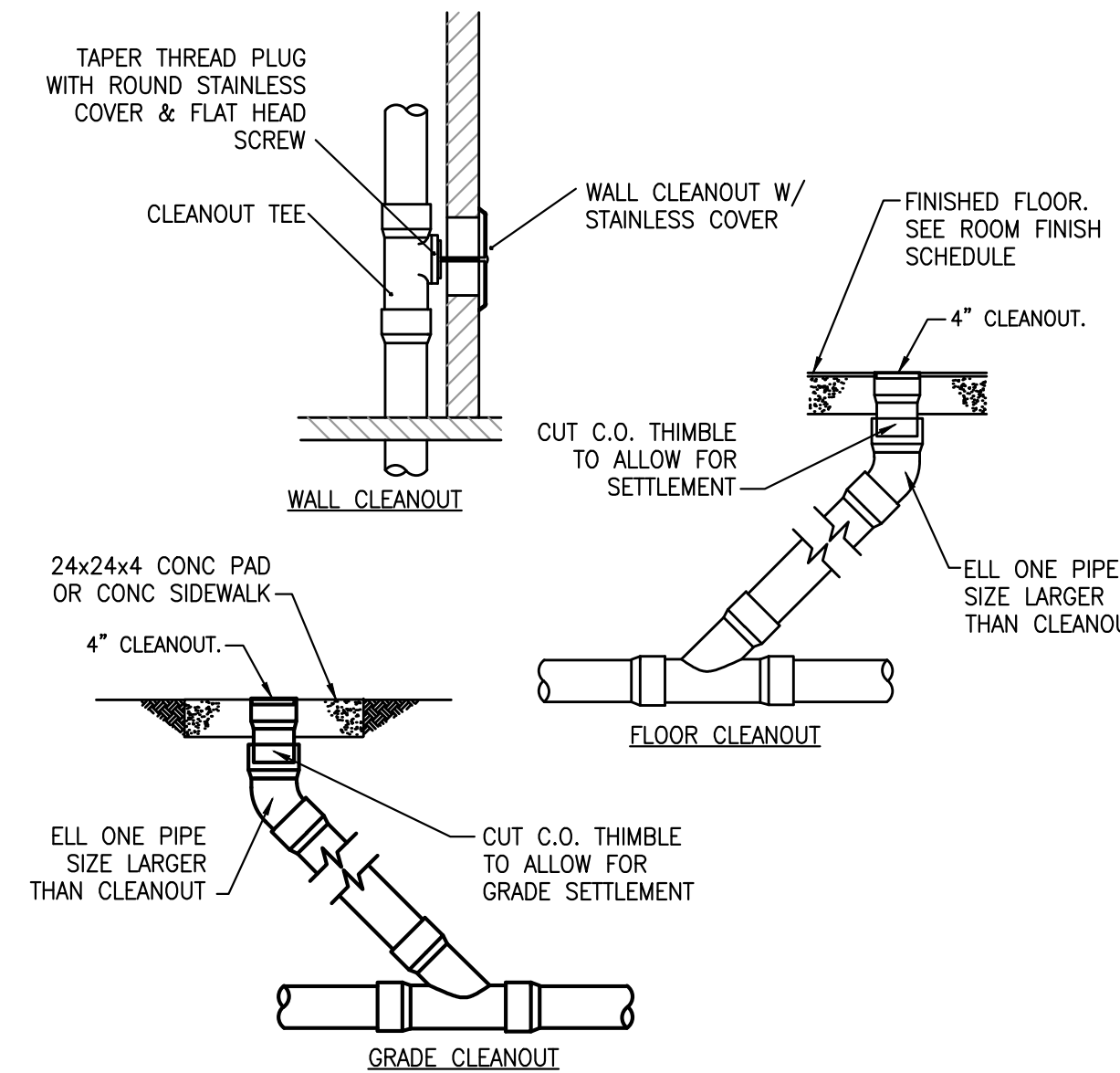
a. THE MAXIMUM HORIZONTAL SPACING OF CAST-IRON PIPE HANGERS SHALL BE INCREASED TO 10 FEET WHERE 10-FOOT LENGTHS OF PIPE ARE INSTALLED.

b. MID-STORY GUIDE.

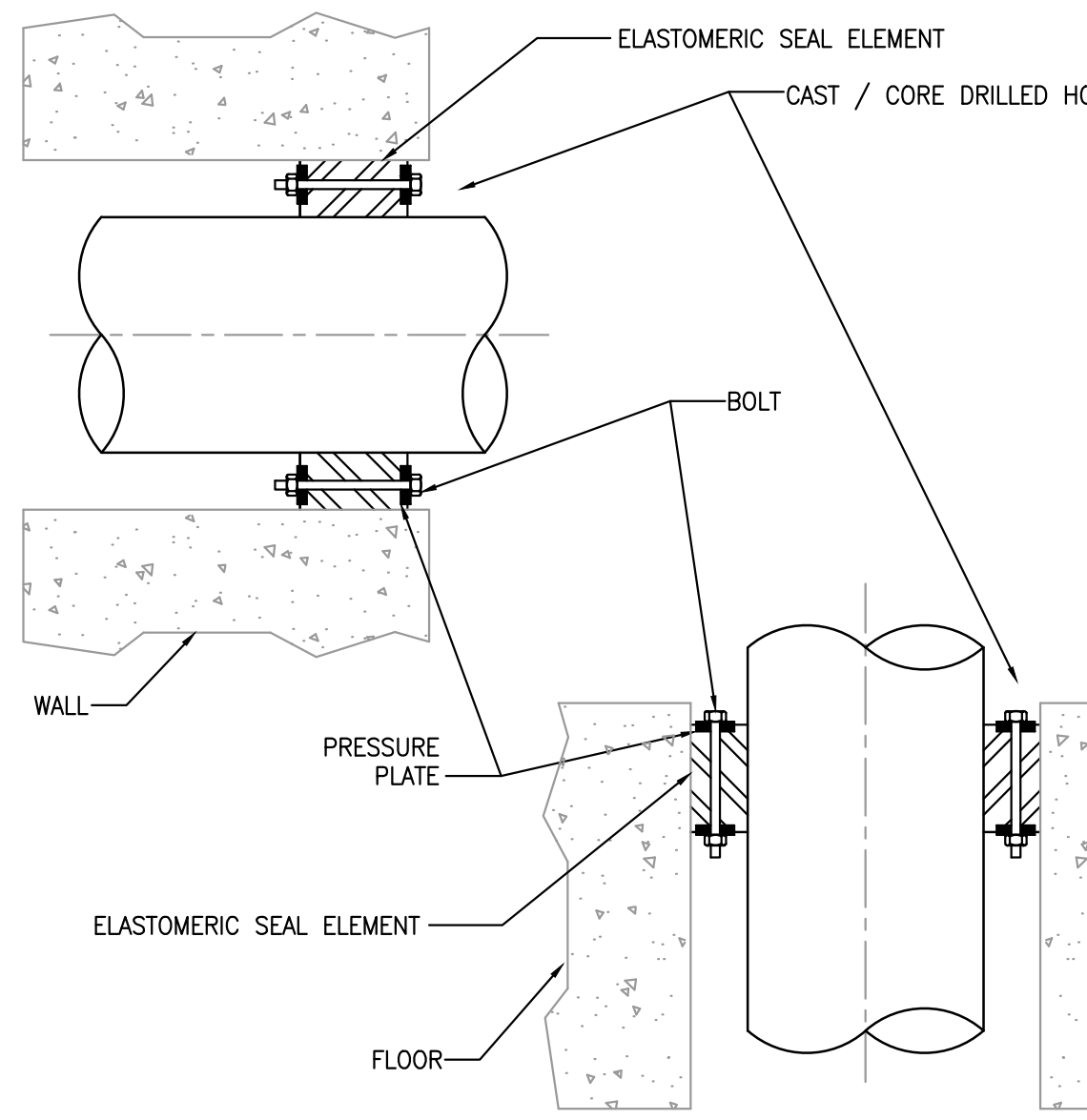
7 TYPICAL PIPE HANGER DETAIL



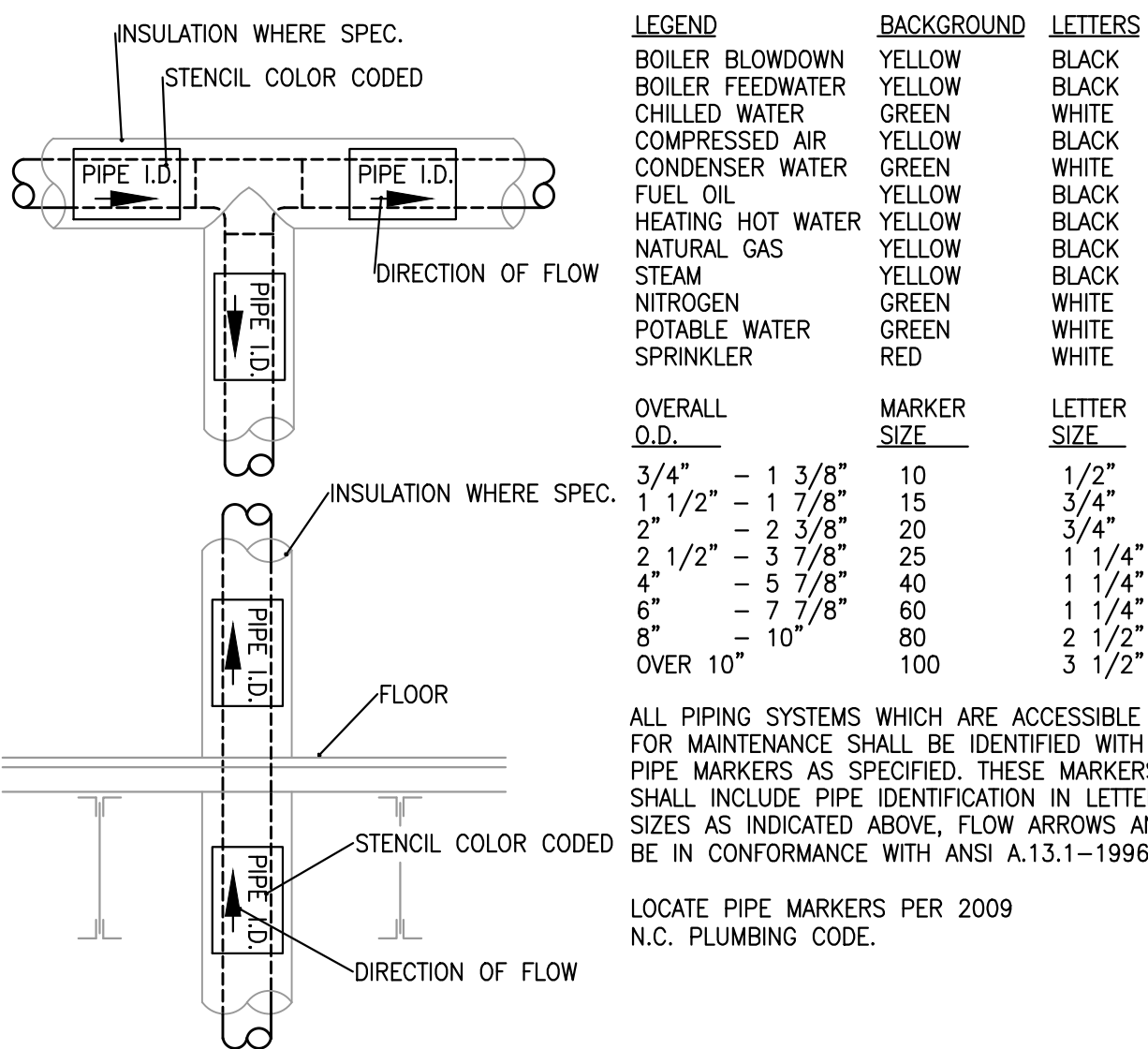
8 TYPICAL WALL MOUNT LAVATORY



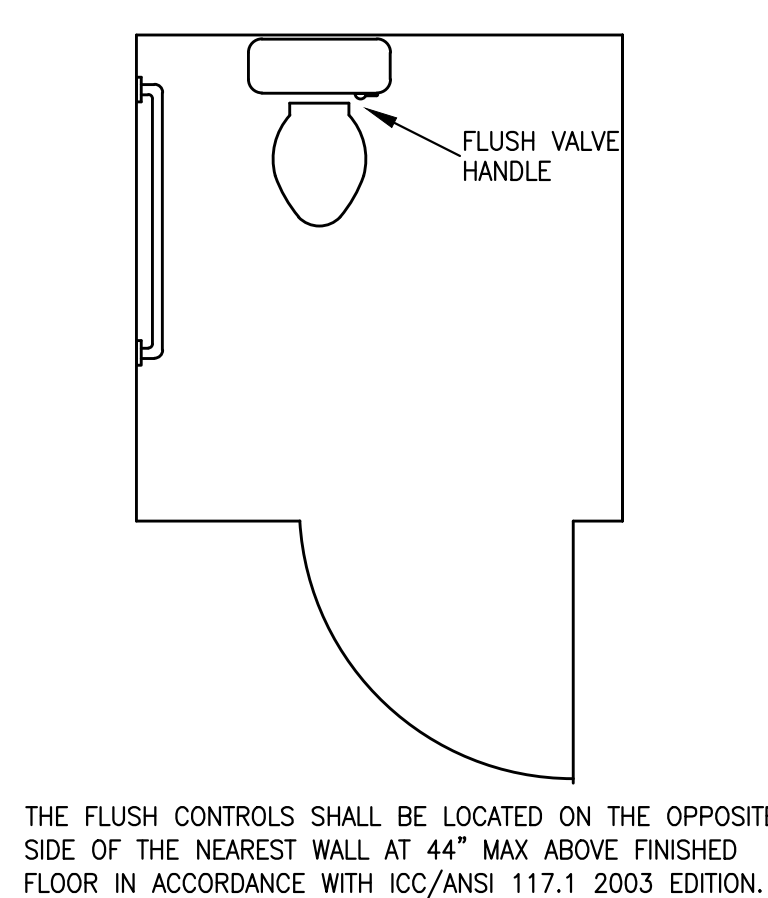
9 CLEANOUT DETAILS



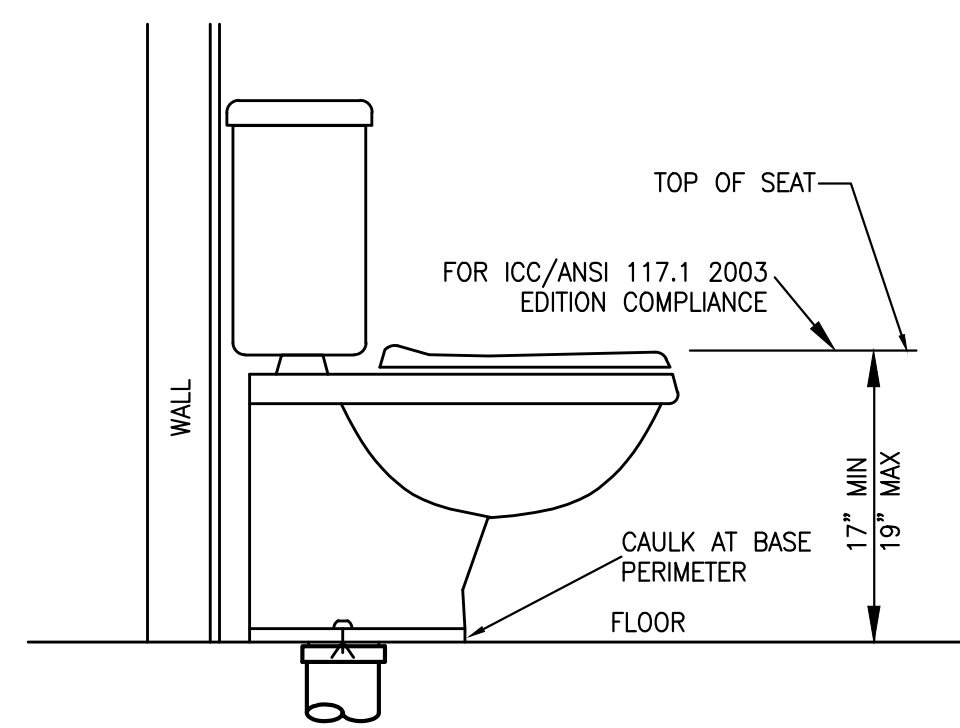
10 LINK SEAL DETAIL



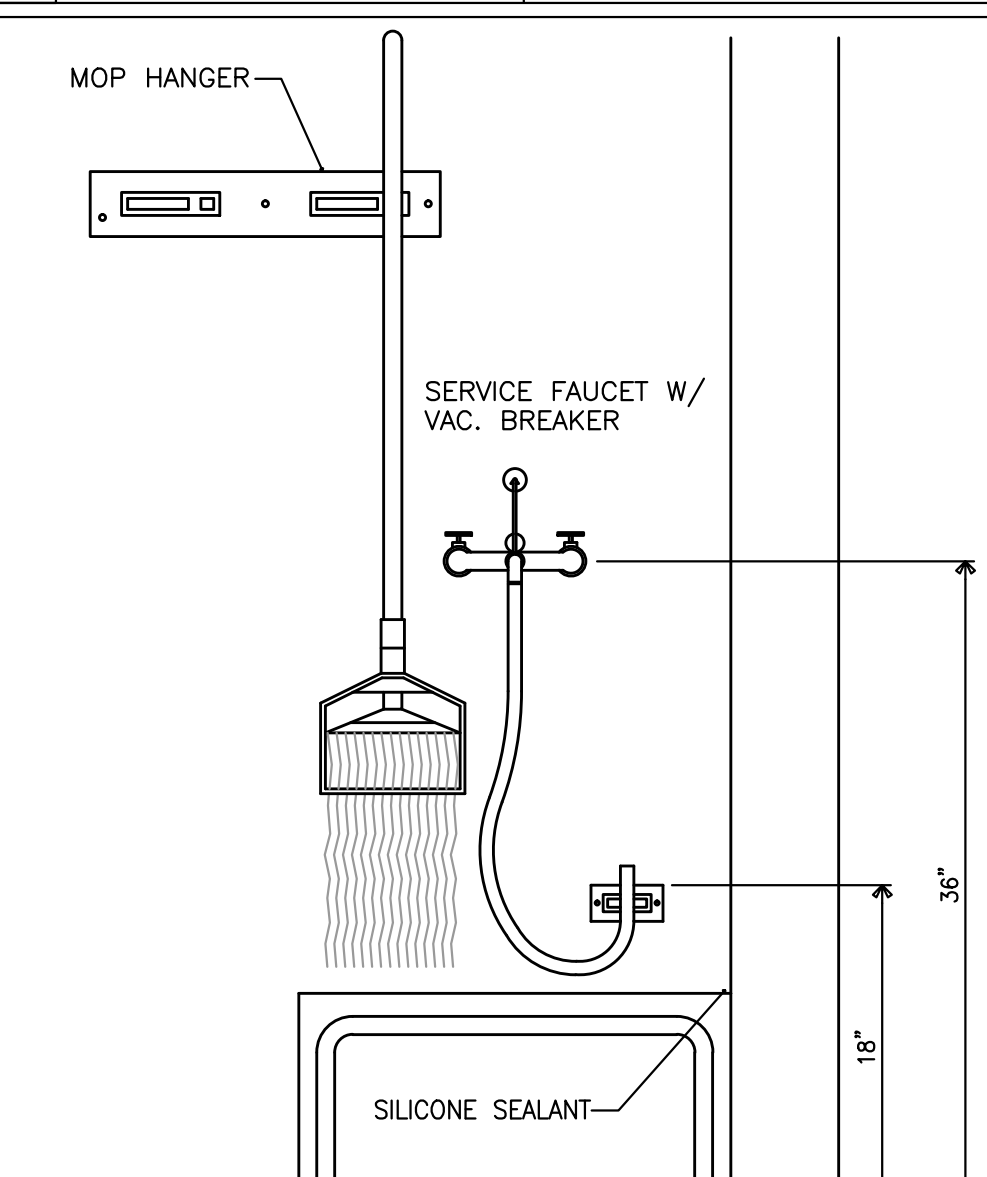
11 PIPE LABELING



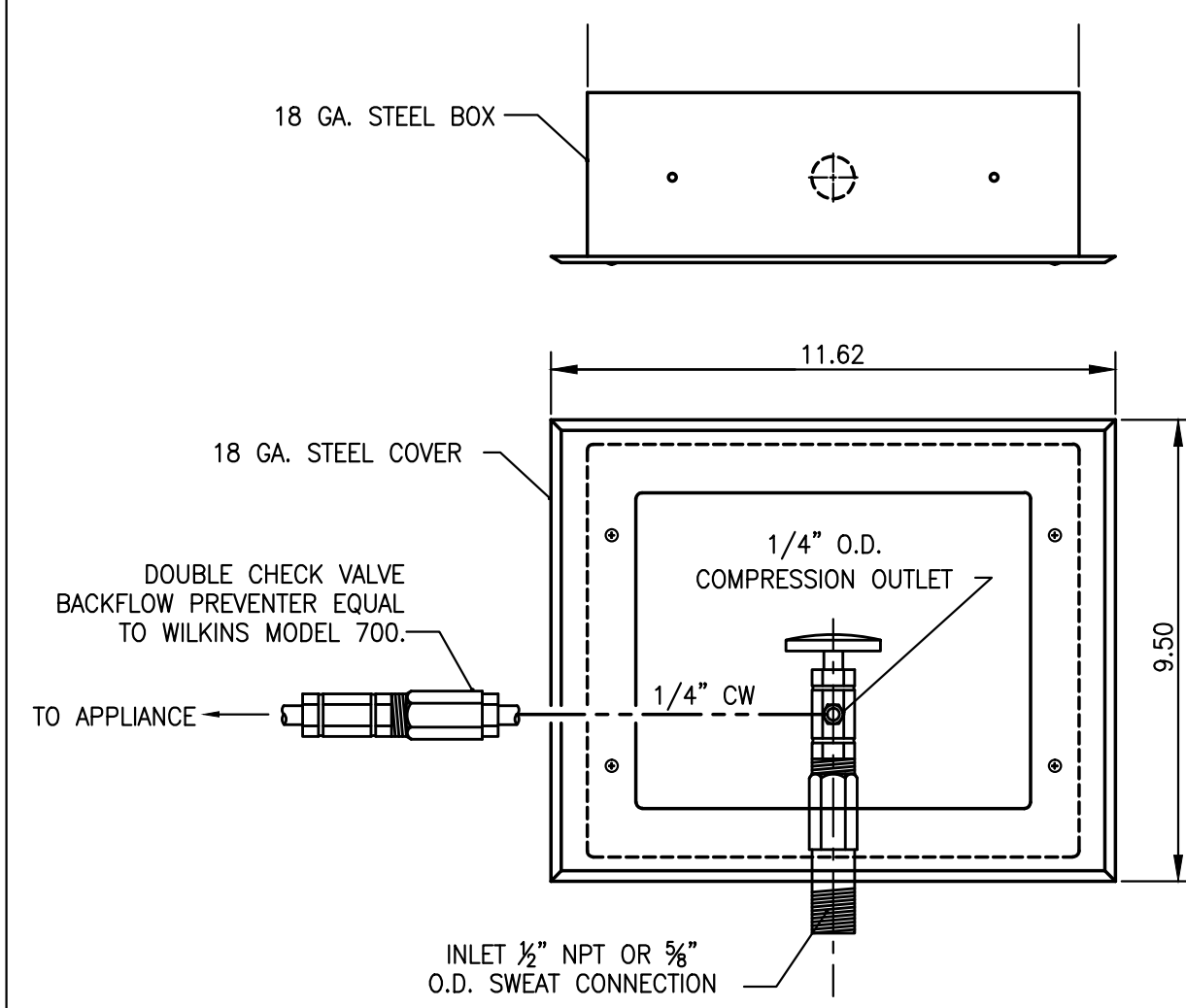
12 ADA WATER CLOSET DETAIL



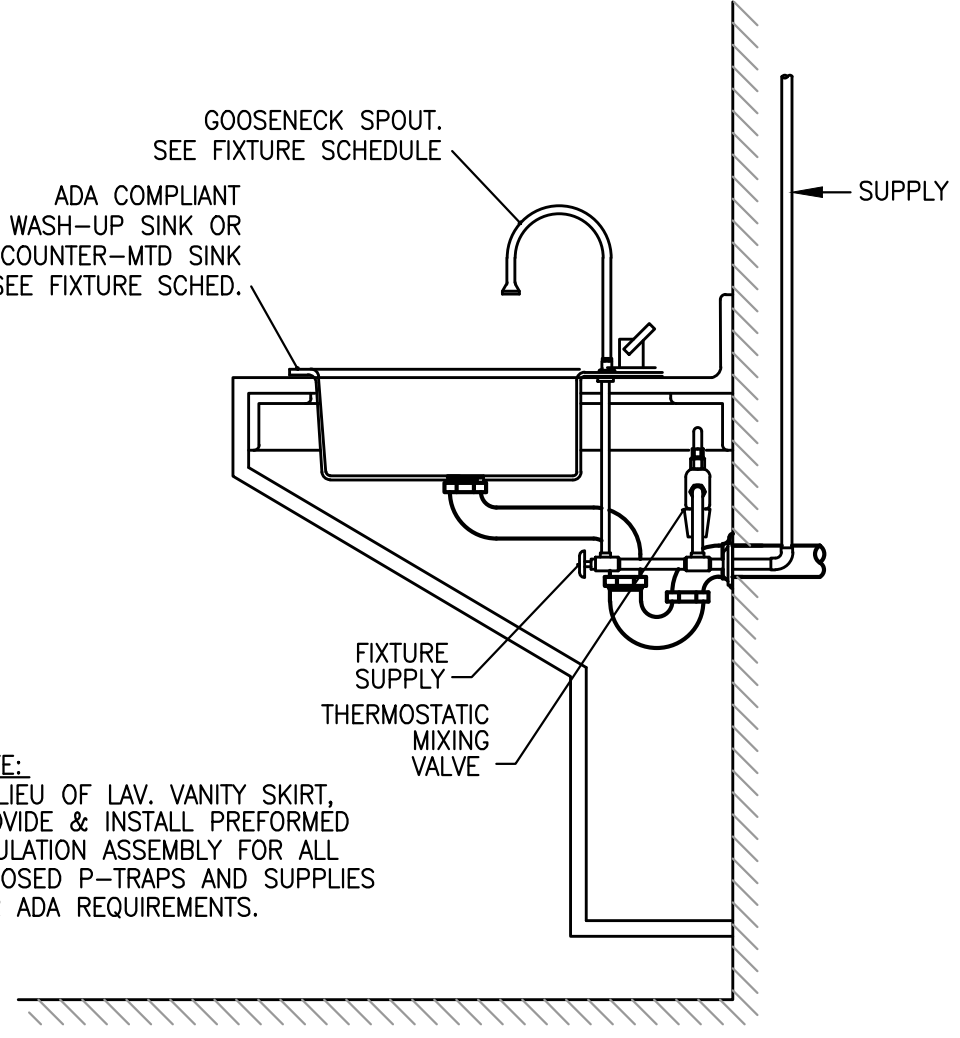
13 FLUSH TANK ADA WATER CLOSET DETAIL



14 MOP BASIN DETAIL

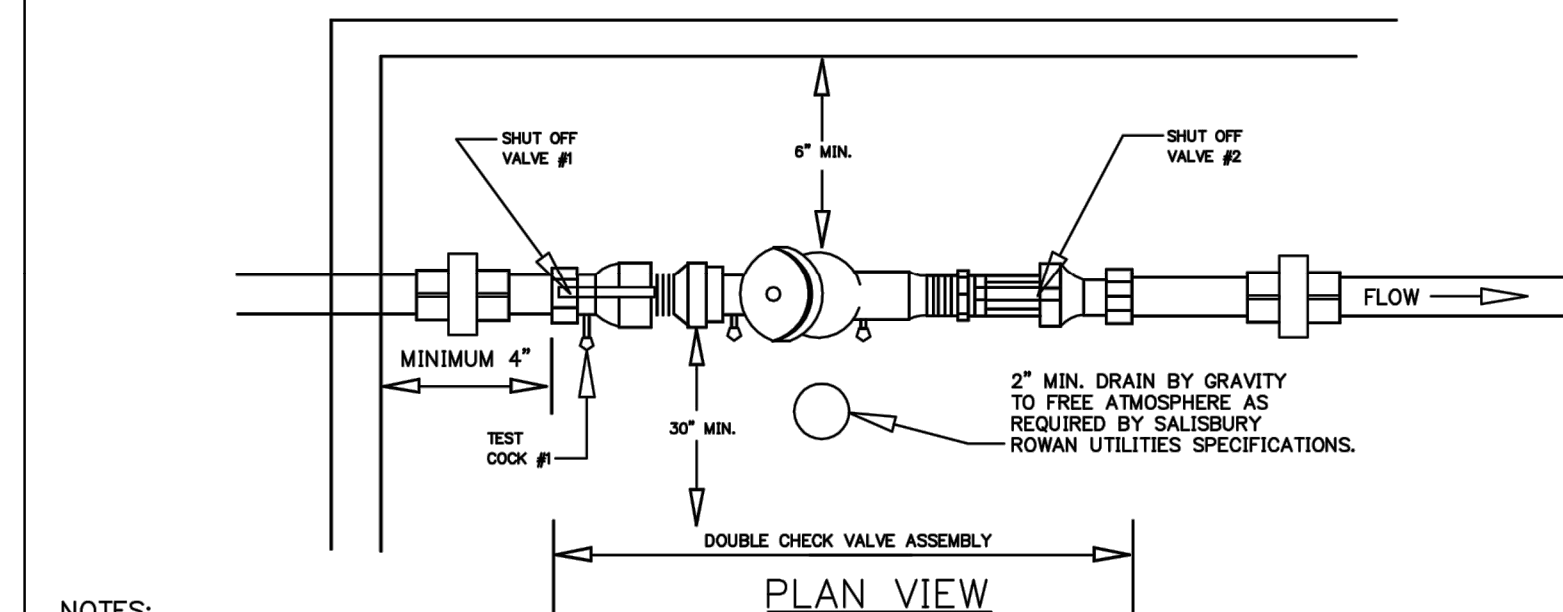
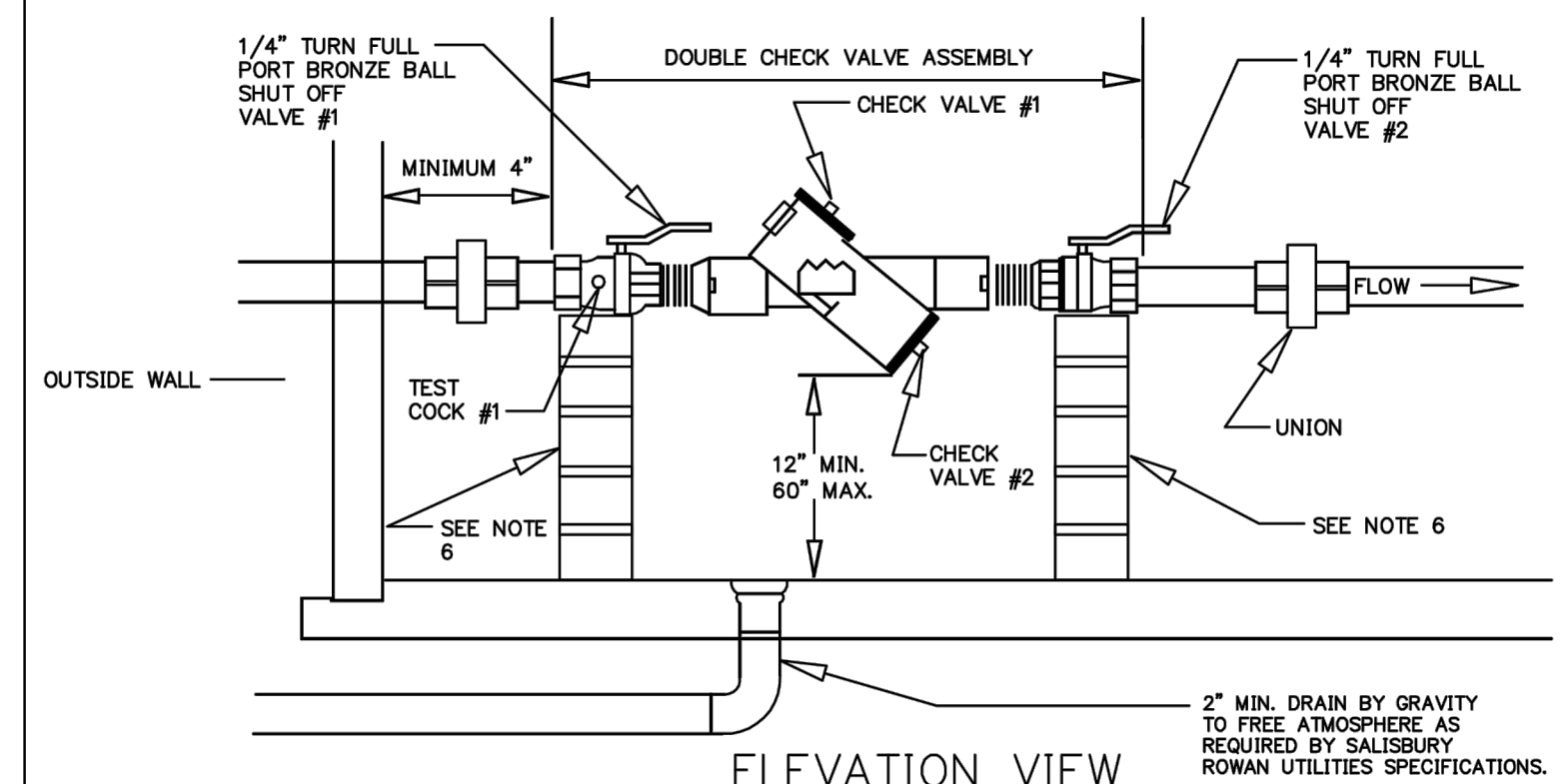


15 RECESSED COLD WATER CONNECTION



16 SINK COUNTER DETAIL

**DOUBLE CHECK VALVE ASSEMBLY (DCVA)
(3/4" - 2") INDOOR**



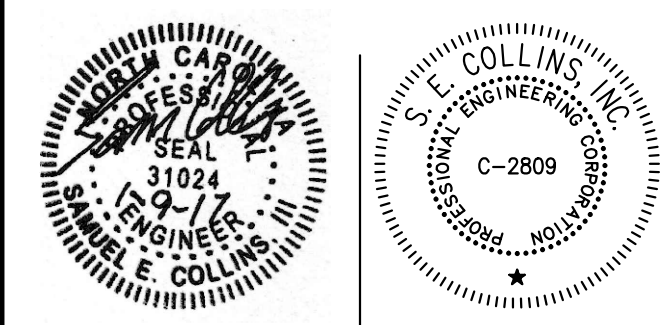
- NOTES:**
- DCVA MUST CONFORM TO SALISBURY-ROWAN UTILITIES SPECIFICATIONS FOR BACKFLOW PREVENTION ASSEMBLIES 3/4" - 2".
 - (BACKFLOW ASSEMBLY MUST BE INSTALLED BEFORE SERVICE LINE IS CONNECTED TO ANY OTHER PIPES, EXCEPT AS AUTHORIZED BY THE WATER PURVEYOR.) WATER LINE MUST BE EXPOSED FOR INSPECTION FROM METER TO BACKFLOW PREVENTER.
 - SALISBURY-ROWAN APPROVED DCVA INCLUDES SHUT OFF VALVES #1 AND #2 AS PART OF THE ASSEMBLY. NO SUBSTITUTIONS SHALL BE PERMITTED.
 - TEST COCK #1 SHALL BE UPSTREAM OF SHUT OFF VALVE #1 AND IS PART OF THE ASSEMBLY.
 - INDOOR INSTALLATION SHALL ONLY BE PERMITTED IN CASES WHERE ADEQUATE SPACE FOR THE BACKFLOW PREVENTION DEVICE IS NOT AVAILABLE OUTSIDE. SALISBURY-ROWAN UTILITIES WILL REVIEW ON A CASE BY CASE BASIS.
 - SUPPORT OF BACKFLOW PREVENTION ASSEMBLY SHALL BE DESIGNED BY OWNER AS REQUIRED.

CITY OF SALISBURY, N.C. STANDARD DETAIL
STANDARD DETAIL BACKFLOW PREVENTION
3/4" - 2" DCVA INDOOR

DATE: OCTOBER 17, 2006
AMENDED: FEBRUARY 3, 2009
NOT TO SCALE
STANDARD BF-5

**PLUMBING
DETAILS**

**Rowan/Kannapolis
ABC STORE &
WAREHOUSE**
Salisbury, NC



SAS
DRAWN BY
SEC
CHECKED BY
DATE
CONC. NO.

SHEET NO.
P2.
OF 2